



Helko
North America



Maintenance & Safety

"Take care of your axe, and it will take care of you."

The Head

Always inspect your axe prior to use, making sure that the head is properly fitted and firmly attached to the handle. Never use an axe with a loose head.

The Handle

Check your handle for any signs of splitting or cracking. If this occurs, replace the handle before using. Maintain your handles over time with a protective coating, such as boiled linseed oil, varnish, or lacquer. Proper care will significantly prolong handle life.

The Edge

Know how to properly hone your axe. The goal is to keep the edge sharp while maintaining the original bevel. Use a straight edge file or sharpening stone. Grinding wheels should only be used by a professional, as overheating can alter the steel temper.

Storage & Sheath

Store your axe in a clean, dry place. Moisture and overexposure to the elements will cause damage over time. After using your axe, clean and oil down the head. A sheath or edge protector should be used to protect the axe blade when not in use. Thick durable leather is recommended. Ordinary leather polish or conditioner may be used to keep the sheath in good condition.

Rust Prevention

High grade carbon steel is susceptible to rusting over time. Rust can be prevented by keeping the axe head well oiled. If rusting does occur, use steel wool to remove, and then wipe down with oil. A complimentary bottle of *Axe-Guard* protective lubricant is provided with every axe.

Proper Technique

When splitting, use a firm and stable chopping surface to reduce the risk of injury. Never split wood against the ground. Take care to avoid striking the handle against logs or other objects, which can happen in the event of a miss swing. This is the leading cause of damaged handles. If your axe blade becomes stuck in a log, rock it back and forth in line with the blade. Never twist side to side, as this may break your handle.

Accidental miss swings and flying debris can cause serious injury to the eyes, feet, and body. Eye protection, steel-toed boots, and proper clothes should always be worn. Spectators should maintain a safe viewing distance. The back side of axes and hatchets (referred to as the "poll" or "butt") should not be used as a striking surface. Never use an axe, maul, or hatchet if you are tired, on medication, or intoxicated.

If maintained and cared for properly, a Helko axe head will last a lifetime.

Company Info

Helko-Werk of Wuppertal, Germany

Established in 1844 in Cronenberg - now a district of Wuppertal, Germany - the Helko enterprise was originally named Helsper Werkzeugfabrik ("Helsper Tool Factory") after the founder and owner. Today, Helko products embody more than 170 years of evolution and experience, and are designed to serve the user with the utmost degree of longevity, reliability, and safety. Every Helko axe and hatchet is crafted to meet stringent German DIN manufacturing standards (DIN 7287, 7294, 7295, 5131, and 5132). The finished tools are safety-proofed by Germany's prestigious testing institute Versuchs und Prüfanstalt Remscheid, and are licensed to wear the VPA/GS label.

Manufacturing

Helko axe heads are dropforged from German C45 high grade carbon steel. Dropforging is a process in which the blacksmith uses tongs to hold hot steel as a drop hammer falls repeatedly onto it, allowing the smith to control the shape while forging. This requires not only impressive hand/eye coordination, but the blacksmith must also have the experience and comprehensive judgement to make split second decisions which will affect the shape and integrity of the finished product.

After forging, the heads are hardened and cooled in a continuously running 70°C oil bath. They are then heated to 400°C, relieving strain on the surface of the steel and providing the exact desired level of hardness. The edges are hardened to approximately 53HRC (Rockwell) up to 30 millimeters from the cutting edge, while the eye is generally left unhardened to prevent cracks in the steel. The heads are later sandblasted to remove oil residue prior to grinding and finishing.

Rockwell hardness is an important factor to consider when evaluating the quality of an axe head. The steel must be tempered just right, without being too soft to hold an edge or hard enough to become brittle. A soft bit will lose its edge quickly, requiring constant sharpening and honing. Conversely, over-hardened bits are liable to chip or crack during normal use. Helko's master blacksmiths have cumulatively spent hundreds of years perfecting the hardness and temper of our axes, creating an ideal balance between superior edge holding ability, ease of sharpening, and resistance to chipping.

Wooden Handles

The quality of the handle is a significant measure of the tool's integrity. Helko proudly equips their axes with some of the finest woods available. Our hickory and ash handles are handcrafted in Switzerland from sustainably sourced and FSC certified (Forest Stewardship Council) American hickory and Swiss ash. It is the FSC's mission to promote environmentally sound, socially beneficial, and economically prosperous management of the world's forests.

American hickory, growing between 60 and 120 feet high, is a hardwood that maintains remarkable bending properties and flexibility. Hickory is known for its shock absorbing and resistance capabilities. It has a coarse texture and a straight grain, and is highly receptive to stains and finishes. Hickory's sapwood, or outer layer, is primarily white with hints of brown, while the heartwood is a pale reddish brown. Similarly, Swiss ash grows between 80 and 120 feet, and like hickory, is a strong and shock absorbing wood with excellent flexibility. It is relatively lightweight for its impressive strength, and is typically straight grained with a coarse texture. Ash's sapwood is shaded in pale whites, and the heartwood can vary from grayish brown to pale yellow streaked with brown.

Traditional

The Traditional line represents Helko's elite series of axes. Each piece is handcrafted by Helko's Master Smiths with over 170 years of expertise. Once the smith is satisfied with his work, the Helko crown logo is hammered into the head. No supplementary work, such as grinding, buffing, or painting is performed, allowing each blade to proudly display its forging marks. No two pieces are exactly alike, making each tool truly unique.

Handmade in Germany by Helko's Master Smiths • German C45 high grade carbon steel • Handle is handcrafted in Switzerland from sustainably sourced and FSC certified American hickory • Handle is individually selected for grain orientation and density • Handle is coated with boiled linseed oil • Features the Helko crown logo • Wooden wedge with additional steel ring wedge • Open die drop forged, heat treated, and oil-hardened • Includes premium leather sheath, handmade in the USA • Includes 1oz. bottle of Axe-Guard protective oil



Black Forest Woodworker
Item #13562
24 in. • 2.2 lbs.



The Hinterland Hatchet
Item #11496
15 in. • 1.25 lbs.



The Pioneer
Item #13561
27.5 in. • 2.5 lbs.



Black Forest Woodworker
Item #13562
24 in. • 2.2 lbs.



Spaltaxt
Item #13582
27.5 in. • 4.4 lbs.

Vario 2000

The Vario 2000 product line features our patented screw system, offering easy interchangeability of axe blades and handles. Using a simple retainer cap and hex key, handles may be replaced in a matter of minutes. Because the system is standardized, all blades and handles are completely interchangeable from one Vario 2000 model to another. The blades are also interchangeable with Helko composite handles. The retainer system was designed with a built-in safety feature that ensures loose heads are kept on the handle, eliminating the risk that they might fly off and strike nearby objects. A steel overstrike protector prevents damage to the handle in the event of a miss-swing. The hex key is included with all completely assembled units. All components are also available separately.

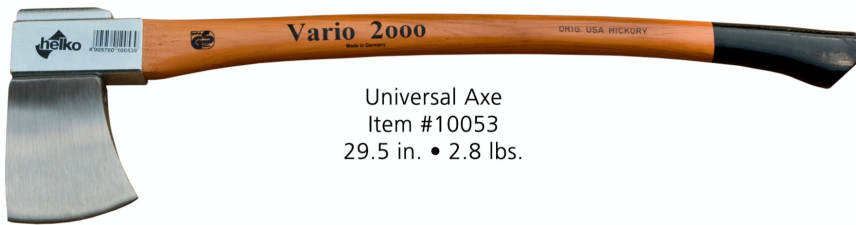
Made in Germany • German C45 high grade carbon steel • Handle is handcrafted in Switzerland from sustainably sourced and FSC certified American hickory • Handle is individually selected for grain orientation and density • Varnished handle with black-dipped grip • Features a steel overstrike protector • Curved ergonomic design provides perfect balance • Drop forged, heat treated, and oil-hardened • Includes premium leather sheath, handmade in the USA • Includes 1oz. bottle of *Axe-Guard* protective oil



Heavy Log Splitter
Item #10058
35.4 in. • 5.1 lbs.



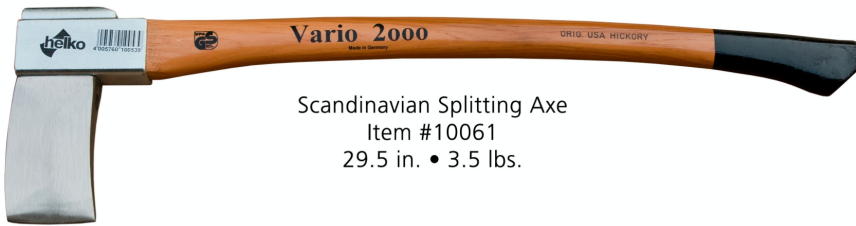
*Hatchet Hatchet
Item #10048 Item #10051
15.7 in. • 1.3 lbs. 17.7 in. • 1.75 lbs.



Universal Axe
Item #10053
29.5 in. • 2.8 lbs.



Splitting Axe
Item #10059
29.5 in. • 3.3 lbs.



Scandinavian Splitting Axe
Item #10061
29.5 in. • 3.5 lbs.



Heavy Universal Axe
Item #10055
35.4 in. • 4 lbs



Heavy Log Splitter *Heavy Log Splitter
Item #10057 Item #10058
29.5 in. • 5.1 lbs. 35.4 in. • 5.1 lbs.

Vario 2000
Made in Germany

ORIG. USA HICKORY

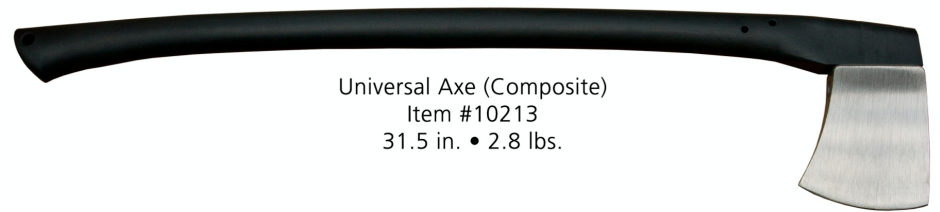
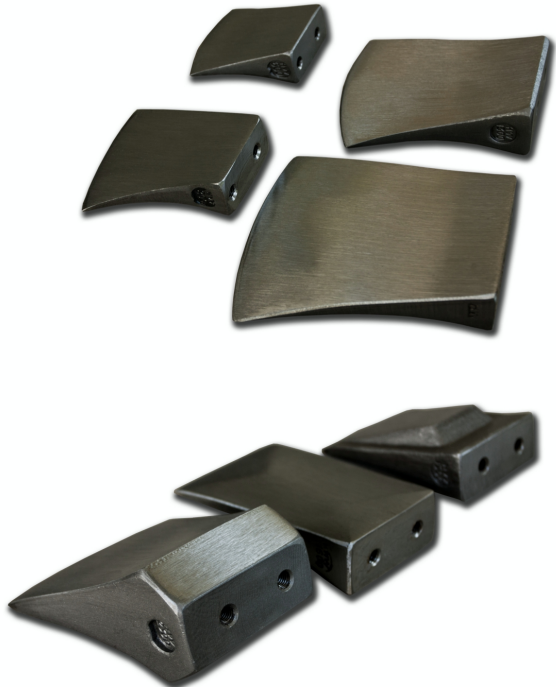


Heavy Log Splitter (Composite)
Item #10223
31.5 in. • 5.1 lbs.



*Hatchet (Composite) Item #10206
17.7 in. • 1.25 lbs.

Hatchet (Composite) Item #10207
17.7 in. • 1.75 lbs.



Universal Axe (Composite)
Item #10213
31.5 in. • 2.8 lbs.

TOP Line

The Helko TOP Line series was created for the discerning professional. All axes, mauls, and sledge hammers incorporate a safety screw, designed to prevent the head from working free of the shaft. The powder coated steel overstrike protector reduces shaft wear and breakage, and protects against miss-swings. The red grip and overstrike protector give all TOP Line products a uniform appearance.

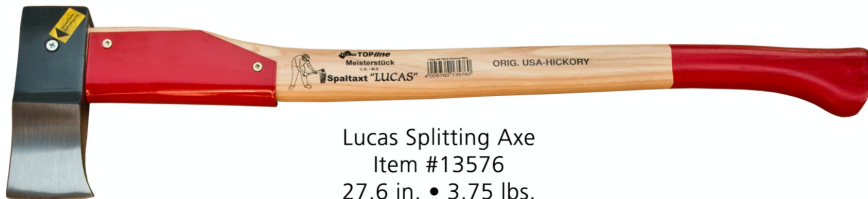
Made in Germany • German C45 high grade carbon steel • Features an Anthracite head • Handle is handcrafted in Switzerland from sustainably sourced and FSC certified American hickory • Handle is individually selected for grain orientation and density • Lightly lacquered handle with red-dipped grip • Features a red powder coated overstrike protector • Additional safety screw installed in head through the handle • Wooden wedge with additional steel ring wedge • Drop forged, heat treated, and oil-hardened • Reinforced eye for extra strength • Includes premium leather sheath, handmade in the USA • Includes 1oz. bottle of Axe-Guard protective oil



Woodworker
Item #10156
31.5 in. • 3.5 lbs.



Woodworker
Item #10156
31.5 in. • 3.5 lbs.



Lucas Splitting Axe
Item #13576
27.6 in. • 3.75 lbs.



Sledge Hammer
Item #20239
23.6 in. • 6.6 lbs.

*Sledge Hammer
Item #20249
27.6 in. • 8.8 lbs.

Sledge Hammer
Item #20262
31.5 in. • 11.0 lbs.



Heavy Splitting Maul
Item #13573
35.4 in. • 7.75 lbs.

Classic

The Classic line is a premium set of felling axes and hatchets that meld versatility, functionality, and aesthetics into a truly unique and eye-catching tool. These axes are an ideal choice for those in search of a general purpose axe that is both stylish and effective. After the head is forged and heat treated, it is ground and polished to a highly reflective mirror finish that reduces friction when cutting and improves rust resistance. These finely crafted masterpieces are equally suited for both serious use and majestic display.

Made in Germany • German C45 high grade carbon steel • Head is polished to a mirror finish • Handle is handcrafted in Switzerland from sustainably sourced and FSC certified American hickory • Handle is individually selected for grain orientation and density • Lightly lacquered handle with leather loop by the grip • Wooden wedge with additional steel ring wedge • Drop forged, heat treated, and oil-hardened • Includes premium leather sheath, handmade in the USA • Includes 1oz. bottle of Axe-Guard protective oil



Forester
Item #10495
31.5 in. • 3.5 lbs.



Pathfinder
Item #11438
15 in. • 1.5 lbs.



Scout
Item #10492
27.6 in. • 2.4 lbs.



Forester
Item #10495
31.5 in. • 3.5 lbs.



Expedition
Item #10497
35.4 in. • 4.4 lbs.



Log Maul
Item #13529
35.4 in. • 6.6 lbs.



ORIG. USA HICKORY

Ranger

The Ranger product line includes our American style felling axes and hatchets, which have become a favorite among several federal, state, and local forest service offices due to their reliability and versatility as a general purpose axe. The heads are coated with a fire red, rust-inhibiting enamel that improves weather resistance and creates a uniform appearance across the product line.

Made in Germany • German C45 high grade carbon steel • Handle is handcrafted in Switzerland from sustainably sourced and FSC certified American hickory • Handle is individually selected for grain orientation and density • Lightly lacquered handle • Wooden wedge with additional steel ring wedge • Drop forged, heat treated, and oil-hardened • Includes 1oz. bottle of Axe-Guard protective oil



Yankee
Item #10466
35.4 in. • 6.0 lbs.



Hunter
Item #11426
15.0 in. • 1.25 lbs.



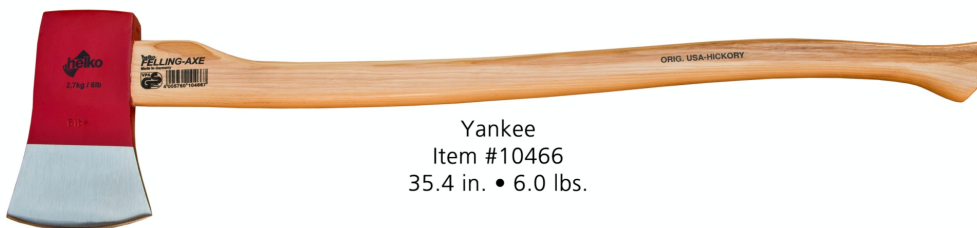
Scout
Item #10451
27.6 in. • 2.5 lbs.



Forester
Item #10456
31.5 in. • 3.5 lbs.



Expedition
Item #10460
35.4 in. • 4.5 lbs.



Yankee
Item #10466
35.4 in. • 6.0 lbs.

German Standard

The German Standard product line includes a wide selection of hatchets, cutting axes, splitting axes, and splitting mauls. These durable, rugged forestry tools are affordably priced and styled in the fashion of traditional German axes which have been in use throughout Europe for hundreds of years. The heads are coated in a rust-inhibiting enamel. The handles are lightly lacquered with a red-dipped grip.

Made in Germany • German C45 high grade carbon steel • Handle is handcrafted in Switzerland from sustainably sourced and FSC certified American hickory or Swiss ash • Handle is individually selected for grain orientation and density • Lightly lacquered handle with red-dipped grip • Wooden wedge with additional steel ring wedge • Drop forged, heat treated, and oil-hardened • Includes 1oz. bottle of Axe-Guard protective oil



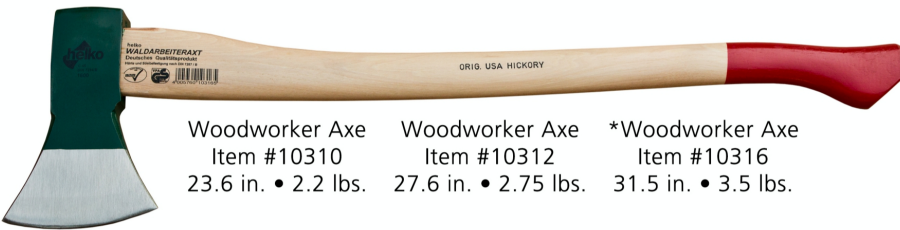
Woodworker Axe
Item #10316
31.5 in. • 3.5 lbs.



Hatchet
Item #11306
14.2 in. • 1.3 lbs.



Universal Axe
Item #10110
23.6 in. • 2.2 lbs.



Woodworker Axe Woodworker Axe *Woodworker Axe
Item #10310 Item #10312 Item #10316
23.6 in. • 2.2 lbs. 27.6 in. • 2.75 lbs. 31.5 in. • 3.5 lbs.



Compact Splitting Axe
Item #13511
19.7 in. • 2.2 lbs.



Splitting Axe
Item #13501
27.6 in. • 4.4 lbs.



Splitting Maul
Item #13534
35.4 in. • 6.6 lbs.

helko
WÄLDARBEITERAXT
Deutsches Qualitätsprodukt
Hände und Spaltkeilung nach DIN 7287/B
VDA
4 005760 103155

ORIG. USA HICKORY

Specialty Items

Made in Germany • German C45 high grade carbon steel • Handle is handcrafted in Switzerland from sustainably sourced and FSC certified American hickory or Swiss ash • Handle is individually selected for grain orientation and density • Lightly lacquered handle • Wooden wedge with additional steel ring wedge • Drop forged, heat treated, and oil-hardened • Includes premium leather sheath, handmade in the USA • Includes 1oz. bottle of *Axe-Guard* protective oil

Camping Hatchet: Mirror-polished head • Poll can be used as a hammer head • A perfect tool for campers and foresters

Tasmania Timber Sport Axe: Uniquely forged wide bit • Specifically designed for timber sporting • Competition training axe • Particularly popular in Australia, New Zealand, and Tasmania



Camping Hatchet
Item #10107
13.8 in. • 1.1 lbs.



Tasmania Timber Sport Axe
Item #10498
31.5 in. • 5 lbs.



Tasmania Timber Sport Axe
Item #10498
31.5 in. • 5 lbs.

Wedges

Steel Splitting Wedge: Made in Germany • German C45 high grade carbon steel • Drop forged, heat treated, and oil-hardened

Plastic Felling Wedge: Made in Austria • High impact polymer • Ribbed texture

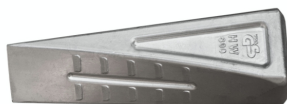
Twisted Aluminum Splitting Wedge
Item #13428
1.75 lbs.



Twisted Steel Splitting Wedge
Item #13421
4.4 lbs.
(Variations Available)



Steel Splitting Wedge
Item #13425
5.5 lbs.
(Variations Available)



Twisted Aluminum Splitting Wedge
Item #13428
1.75 lbs.



Plastic Felling Wedge
Item #13434
1.0 lbs.
(Variations Available)



Cone Splitting Wedge
Item #13417
3.5 lbs.



Forestry Tools

Felling Bar: Made in Germany • Forged from high grade carbon steel • Heat treated steel cant hook • Heavy gauge rectangular steel handle • 5 toothed plate • Used to fell trees, roll logs, break up stumps, and free pinched saws • Silver and orange powder coating offers high visibility on the job • Large non-slip rubber grip • Ability to grip and move logs of a wide variety of sizes

Log Pick: Made in Germany • German C45 high grade carbon steel • Handle is handcrafted in Switzerland from sustainably sourced and FSC certified American hickory • Handle is individually selected for grain orientation and density • Lightly lacquered handle with red-dipped grip • Wooden wedge with additional steel ring wedge • Drop forged, heat treated, and oil-hardened • Includes 1oz. bottle of *Axe-Guard* protective oil



Log Pick
Item #13395
35.25 in. • 4 lbs.



Felling Bar
Item #13388
32.2 in. • 7 lbs.



Billhook
Item #13206
16.2 in. • 1.4 lbs.



Log Pick
Item #13395
35.25 in. • 4 lbs.



Lifting Tongs
Item #13319
10.5 in. • 1.1 lbs.

Accessories

Sheaths: Handmade in the USA from quality vegetable tanned saddle leather • Stamped with Helko North America logo • Fastened with nickel-plated rivets • Features an adjustable buckle strap • Available sizes:

Small: Fits blades up to 3-3/4" wide

Medium: Fits blades up to 4-5/8" wide

Large: Fits blades up to 5-3/4" wide

Handles: Handcrafted in Switzerland from sustainably sourced and FSC certified American hickory and Swiss ash

Heads: German C45 high grade carbon steel • Drop forged, heat treated, and oil-hardened

Axe-Guard: 100% green and biodegradable protective oil • Non-toxic and non-hazardous • Prevents corrosion & protects axe blade • No messy, oily residue • Keeps head free of sap and pitch • Manufactured exclusively for Helko North America



Sheath, Medium
Item #21001



Axe-Guard



Sheath, Large
Item #21002
(Variations Available)



Vario 2000, Heavy Splitting Head
Item #10066
5.1 lbs.
(Variations Available)



Hickory Handle
Item #15180
31.5 in.
(Variations Available)



Helko North America

9215 Santa Fe Springs Rd.
Santa Fe Springs, CA 90670

Tel: (526) 946-6668
Fax: (562) 946-4000
www.helkonorthamerica.com

