

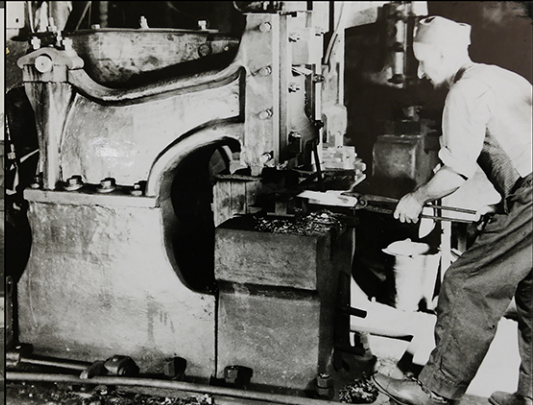


Helko Werk
Germany

A smaller version of the Helko Werk logo is embossed on the wooden handle of the axe. It includes the crown and wings emblem and the text 'Helko Werk Germany'.

Helko Werk
Germany

AMS
AGE
T



Helko Werk of Wuppertal, Germany

Established in 1844 in Cronenberg, today a district of Wuppertal, Germany, the Helko enterprise was originally named Helsper Werkzeugfabrik ("Helsper Tool Factory") after the founder and owner. Today, Helko products embody more than 170 years of evolution and experience, and are designed to serve the user with the utmost degree of longevity, reliability, and safety.

Heads

Helko Werk axe heads are open face drop forged from German C50 high grade carbon steel. Dropforging is a process in which the blacksmith uses tongs to hold hot steel as a drop hammer falls repeatedly onto it. This requires not only impressive hand/eye coordination, but the blacksmith must also have the experience and comprehensive judgement to make split second decisions which will affect the shape and integrity of the finished product.

After forging, the heads are hardened and cooled in a continuously running 70°C oil bath. They are then heated to 400°C, relieving strain on the surface of the steel and providing the exact desired level of hardness. The blade edges are hardened to approximately 53-56 HRC (Rockwell) up to 30 millimeters from the cutting edge, while the eye is generally left unhardened to prevent cracks in the steel. The heads are later sandblasted to forging scales, steel slag, and oil residue, prior to grinding or finishing.

Rockwell Hardness

Rockwell hardness is an important factor to consider when evaluating the quality of an axe head. The steel must be tempered just right, without being too soft to hold an edge or hard enough to become brittle. A soft bit will lose its edge quickly, requiring constant sharpening and honing. Conversely, over-hardened bits are liable to chip or crack during normal use.

Helko's Master Smiths have cumulatively spent hundreds of years perfecting the hardness and temper of our axes, creating an ideal balance between superior edge holding ability, ease of sharpening, and resistance to chipping. Helko edges are 53-56 HRC.

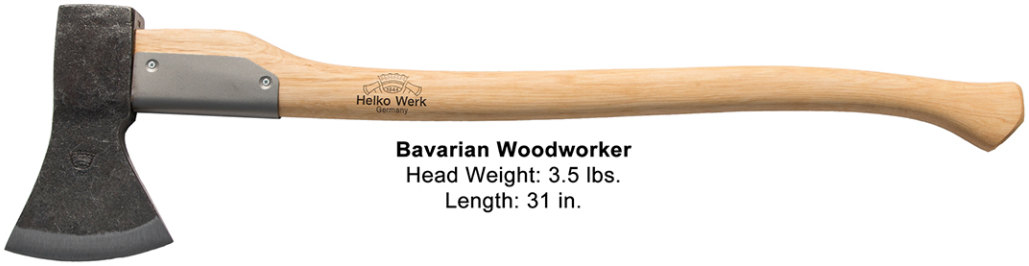
Handles

The quality of the handle is a significant measure of the tool's integrity. Helko Werk axe handles are handcrafted in Switzerland from A-Grade American hickory. The handles are individually selected for strength, grain orientation, and density.

American hickory, growing between 60 and 120 feet high, is a hardwood that maintains remarkable bending properties and flexibility. Hickory is known for its shock absorbing and resistance capabilities. It has a coarse texture and a straight grain, and is highly receptive to stains and finishes. Hickory's sapwood, or outer layer, is primarily white with shades of brown, while the heartwood is a pale reddish brown.



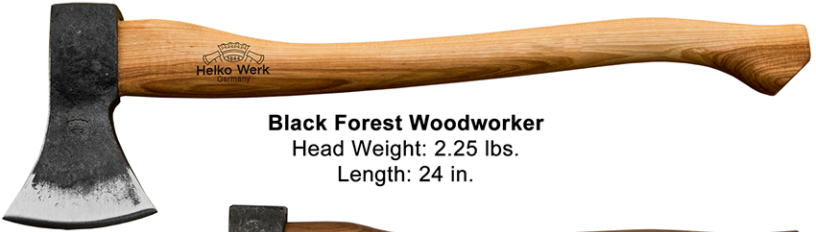
Traditional



Bavarian Woodworker
Head Weight: 3.5 lbs.
Length: 31 in.



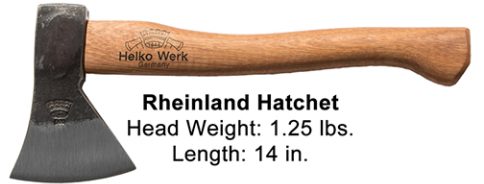
Hessen Woodworker
Head Weight: 2.75 lbs.
Length: 28 in.



Black Forest Woodworker
Head Weight: 2.25 lbs.
Length: 24 in.



Rheinland Pack Axe
Head Weight: 1.5 lbs.
Length: 20 in.



Rheinland Hatchet
Head Weight: 1.25 lbs.
Length: 14 in.



Saxon Splitter
Head Weight: 6.2 lbs.
Length: 31 in.



Hinterland Double Bit
Head Weight: 3.5 lbs.
Length: 30 in.



Splitting Maul
Head Weight: 6.7 lbs.
Length: 35 in.



Spaltaxt
Head Weight: 4.5 lbs.
Length: 28 in.



Mini Spalter
Head Weight: 2.25 lbs.
Length: 19 in.





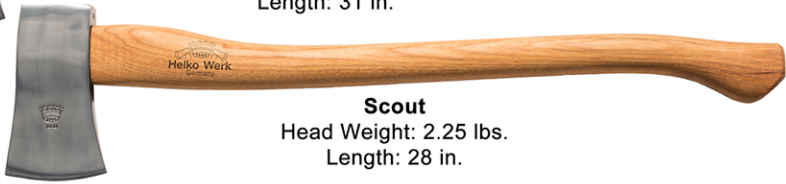
Classic



Expedition
Head Weight: 4.5 lbs.
Length: 35 in.



Forester
Head Weight: 3.5 lbs.
Length: 31 in.



Scout
Head Weight: 2.25 lbs.
Length: 28 in.



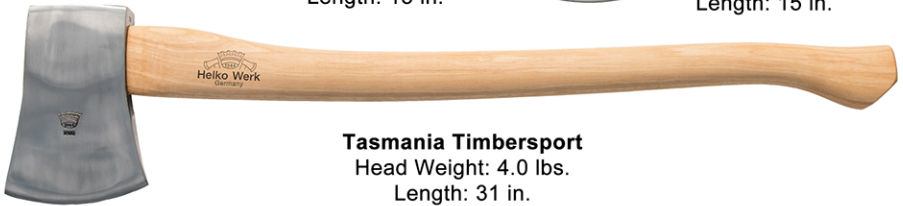
Journeyman Pack Axe
Head Weight: 1.5 lbs.
Length: 20 in.



Voyager
Head Weight: 1.1 lbs.
Length: 13 in.



Pathfinder
Head Weight: 1.25 lbs.
Length: 15 in.



Tasmania Timbersport
Head Weight: 4.0 lbs.
Length: 31 in.



Scandinavian Splitting Axe
Head Weight: 5.5 lbs.
Length: 31 in.



Odyssey
Head Weight: 3.5 lbs.
Length: 30 in.

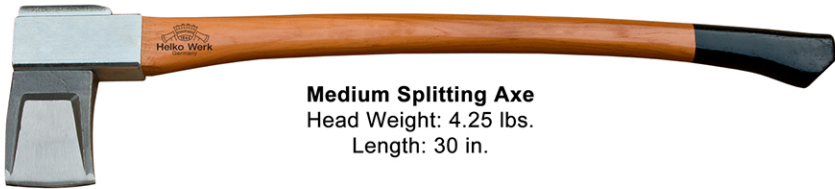
Vario 2000



Universal Hatchet
Head Weight: 1.75 lbs.
Length: 18 in.



Universal Axe
Head Weight: 4.0 lbs.
Length: 30 in.



Medium Splitting Axe
Head Weight: 4.25 lbs.
Length: 30 in.



Heavy Universal Axe
Head Weight: 5.5 lbs.
Length: 36 in.



Heavy Log Splitter
Head Weight: 6.7 lbs.
Length: 36 in.











Helko North America

9215 Santa Fe Springs Rd.
Santa Fe Springs, CA 90670

Tel: (562) 946-6668

Fax: (562) 946-4000

www.helkonorthamerica.com

